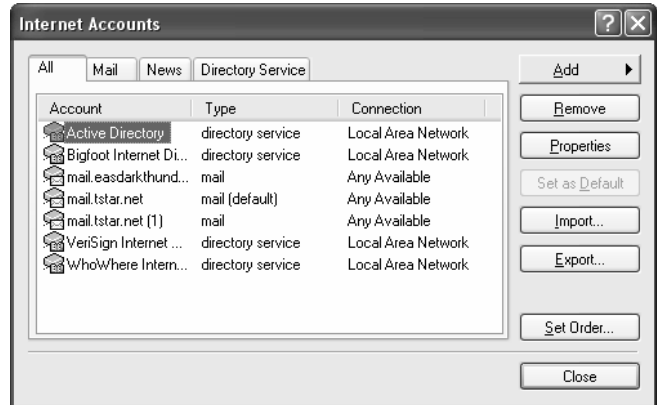


# Setup TSTAR Email using Outlook Express

**To open Outlook Express:** Double-click the icon this is titled "Outlook Express".

## To set up your TSTAR Email account:

1. From the Outlook Express menu bar, click "**Tools**" / "**Accounts**" and then click "**Add**" / "**Mail**".
2. For "**Display Name**" type name as you would like it to appear in outgoing messages. Click "**Next**".
3. For "**Email Address**" enter "**Your Email Address**" from your "Account Setup Information" sheet. Click "**Next**".
4. On the "**Email Server Names**" screen, make sure the first selection reads "My incoming mail sever is a **POP3** server". For "**Incoming mail server**" type **mail.tstar.net**. For "**Outgoing mail server**" type **smtp.tstar.net** and click "**Next**".
5. On the "Internet Mail Logon" screen, enter the "**Email Login Name**" from your "Account Setup Information" sheet for "**Pop account name**". Then enter your **password** in lower case letters and click "**Next**" and then click "**Finish**".
6. On the "**Internet Accounts**" screen, select the newly created email account and click the "**Properties**" button.
7. Click on the "**Servers**" tab and then click on the box "**My server requires authentication**" button.
8. If you are using a dialup connection, click on the "**Connections**" tab, click on the box "**Always connect to this account using**", and then click on the drop down box to select the "**TSTAR**" dialup connection.
9. Click "**OK**" and click "**Close**".

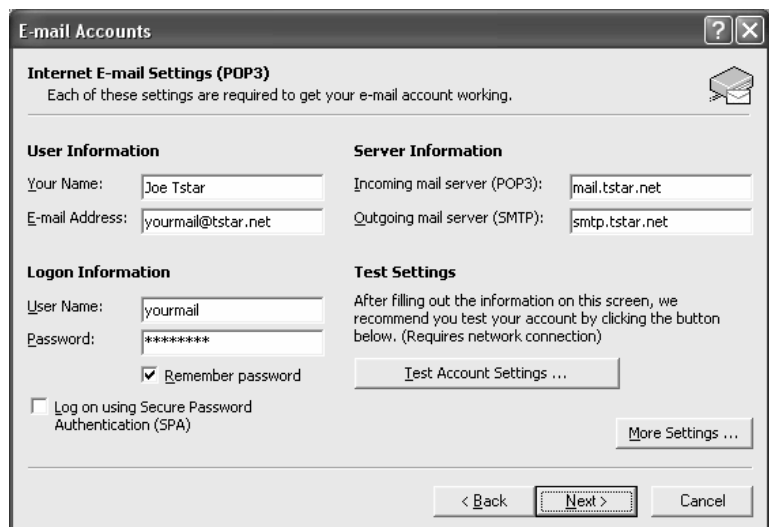


# Setup TSTAR Email with Outlook

**To open Microsoft Outlook:** Double-click the icon that is titled "Microsoft Outlook".

## To set up your TSTAR Email account:

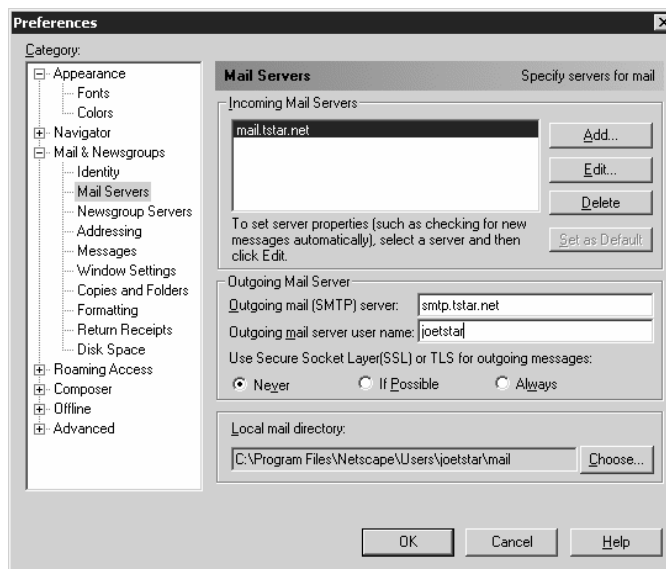
1. From the Outlook menu bar, click "**Tools**" / "**Email Accounts**".
2. Under "**Email**" select "**Add a new email account**" and. Click "**Next**".
3. Select "**POP3**" and click "**Next**".
4. On the "**Internet E-mail Settings (POP3)**" screen, for "**Your Name:**" enter your name as you would like it to appear on outgoing messages. For "**Email Address**" enter your email address from the "Account Setup Information" sheet. For "**Incoming mail server (POP3):**" enter **mail.tstar.net**. For "**Outgoing mail server (SMTP):**" enter **smtp.tstar.net**. Under "**Logon Information**" enter your **username** in the box labeled "**User Name**" and your **password** in the box labeled "**Password**".
5. Click on the "**More Settings**" button, click on the "**Outgoing Server**" tab, and put a check in "**My outgoing server requires authentication**". Click "**OK**", click "**Next**", and then click "**Finish**".



## Setup TSTAR Email using Netscape 4.7

From the main Netscape window, click **"Edit" / "Preferences"** to access the setup screen.

1. Look at the **"Category"** list. If **"Mail & Newsgroups"** has a **"+"** next to it, double-click **"Mail & Newsgroups"**.
2. Click once on **"Mail Server"**.
3. Click the **"Add"** button under **"Incoming Mail Servers"**. For **"Server Name"** type: **mail.tstar.net**. For **"Server Type"** select **"POP3"**. For **"User Name"** enter your **Email Login Name** from the **"Account Setup Information"** sheet. Click **"OK"** when finished.
4. For **"Outgoing Mail Server"** enter: **smtp.tstar.net**.
5. For **"Outgoing mail server user name"** enter your **"Email Login Name"** from the **"Account Setup Information"** sheet.
6. Under Category, click **"Identity"**.
7. For **"Your Name"**, enter your name as you would like it to appear on outgoing messages. For **"Email Address"** enter your email address which can be found on your **"Account Setup Information"** sheet. Click **"OK"**.



## TSTAR Email using Netscape 7

1. On the menu bar, click on **"Windows"** and then **"Mail & Newsgroups"**.
2. On the menu bar, click **"Edit"** and then **"Mail & Newsgroup account settings"**.
3. Click the **"Add Account"** button.
4. Select **"Email Account"** and click **"Next"**.
5. For **"Your Name"**, enter your name as you would like it to appear on outgoing messages.
6. For **"Email Address"**, enter your email address which can be found on the **"Account Setup Information"** sheet and then, click **"Next"**.
7. For the type of mail server, select **"POP"**. For **"Incoming Server"** type: **mail.tstar.net**. For **"Outgoing Server"** type: **smtp.tstar.net**. Click **"Next"**.
8. Enter your **username** in both the **Incoming User Name** and **Outgoing User Name** boxes. Click **"Next"**.
9. Click **"Next"** and then click **"Finish"**.
10. Select **"Outgoing Server (SMTP)"**, put a check in **"Use name and password"**, and then enter your **username** in the **"User Name"** box. Click **"OK"**.

